

Map Description

More information available at <http://www.ceframe.eu>

This map has been generated in October, 2011 in the framework of CEframe project. The base map in the background is OpenStreetMap (<http://www.openstreetmap.org/>). It gives an overview about the surrounding area of the rivers and the flood-affected regions along them. All the maps are generalized for all countries to be comparable and easy to read.

The layers reflect the core results of the completed studies in the frame inland inundation (flood hazard). The data are harmonized internationally. The extents show the boundaries of the possible water coverage in the region with water depth.

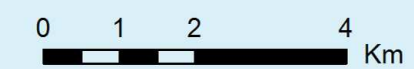
Map Legend

Inundation

- High probability flood
- Medium probability flood
- Low probability flood
- Groundwater inundation

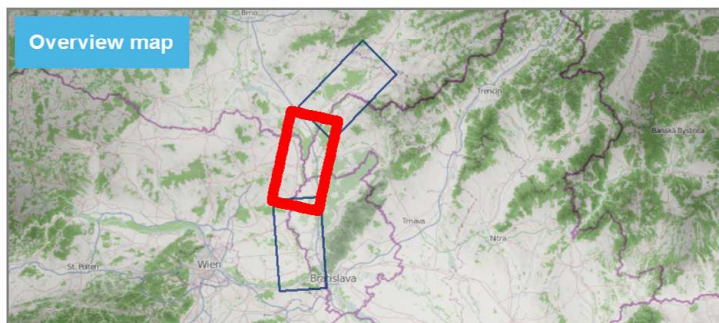
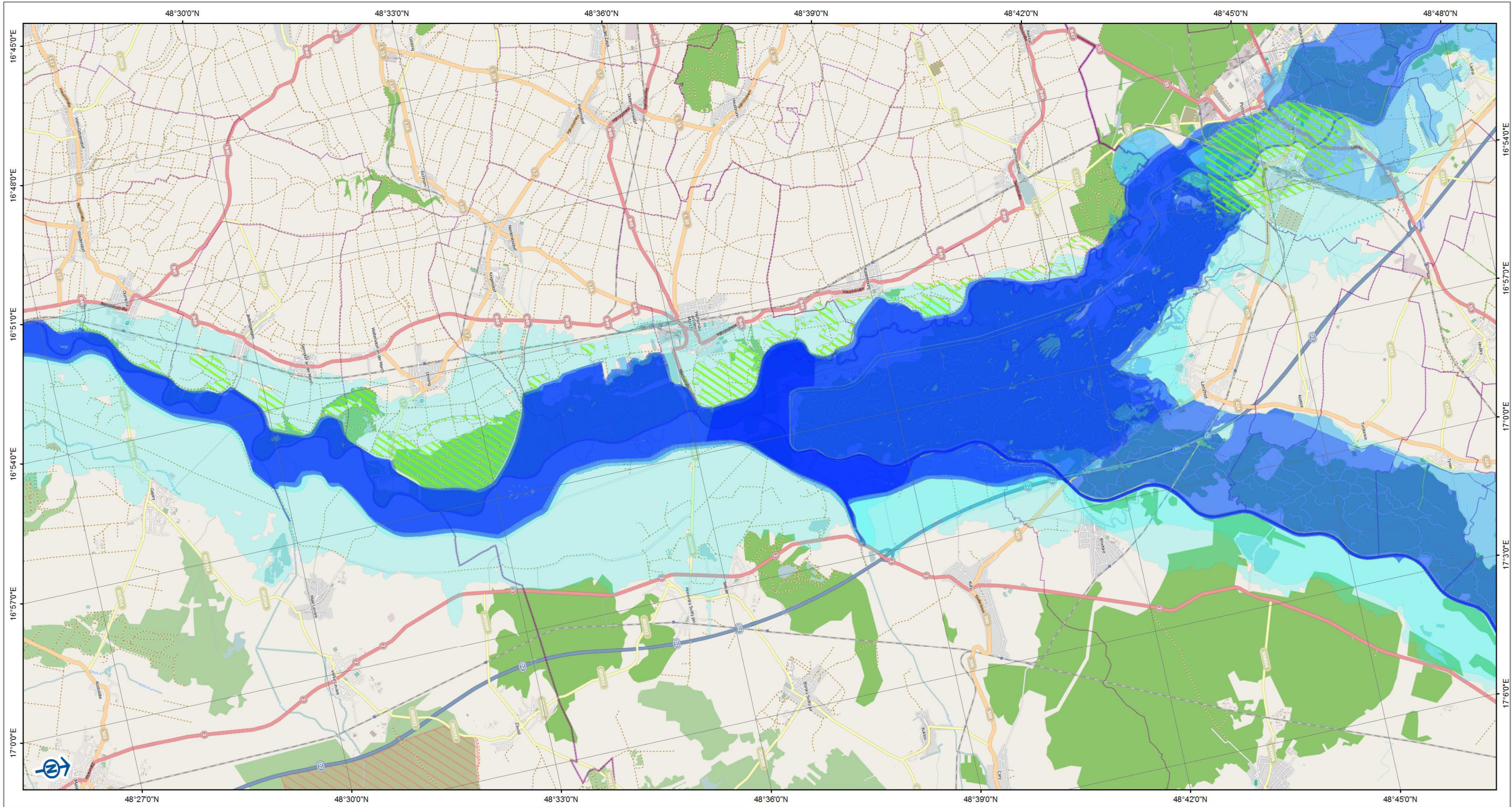
Map Properties

Projection: UTM N33
Datum: WGS84



1:100 000

Thematic Map: CEFRAME project partners
www.ceframe.eu
Base Map: © OpenStreetMap contributors, CC-BY-SA
www.openstreetmap.org



Map Description

More information available at <http://www.ceframe.eu>

This map has been generated in October, 2011 in the framework of CEframe project. The base map in the background is OpenStreetMap (<http://www.openstreetmap.org/>). It gives an overview about the surrounding area of the rivers and the flood-affected regions along them. All the maps are generalized for all countries to be comparable and easy to read.

The layers reflect the core results of the completed studies in the frame inland inundation (flood hazard). The data are harmonized internationally. The extents show the boundaries of the possible water coverage in the region with water depth.

Map Legend

Inundation

- High probability flood
- Medium probability flood
- Low probability flood
- Groundwater inundation

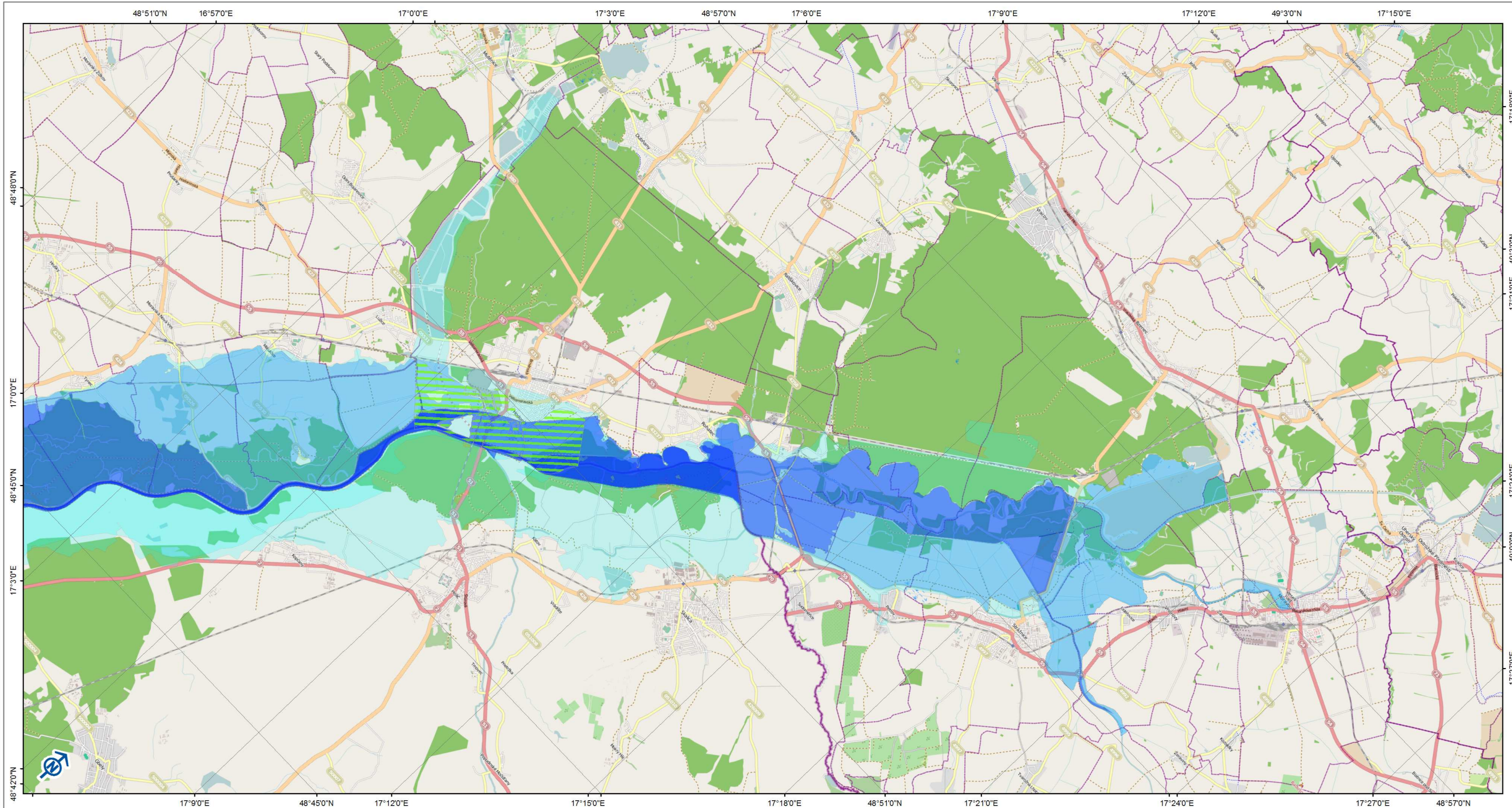
Map Properties

Projection: UTM N33
Datum: WGS84



1:100 000

Thematic Map: CEFRAME project partners
www.ceframe.eu
Base Map: © OpenStreetMap contributors, CC-BY-SA
www.openstreetmap.org



Map Description

More information available at <http://www.ceframe.eu>

This map has been generated in October, 2011 in the framework of CEframe project. The base map in the background is OpenStreetMap (<http://www.openstreetmap.org/>). It gives an overview about the surrounding area of the rivers and the flood-affected regions along them. All the maps are generalized for all countries to be comparable and easy to read.

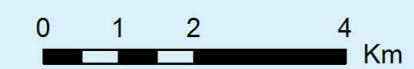
The layers reflect the core results of the completed studies in the frame inland inundation (flood hazard). The data are harmonized internationally. The extents show the boundaries of the possible water coverage in the region with water depth.

Map Legend

- Inundation**
- High probability flood
 - Medium probability flood
 - Low probability flood
 - Groundwater inundation

Map Properties

Projection: UTM N33
Datum: WGS84



1:100 000

Thematic Map: CEFRAME project partners
www.ceframe.eu
Base Map: © OpenStreetMap contributors, CC-BY-SA
www.openstreetmap.org