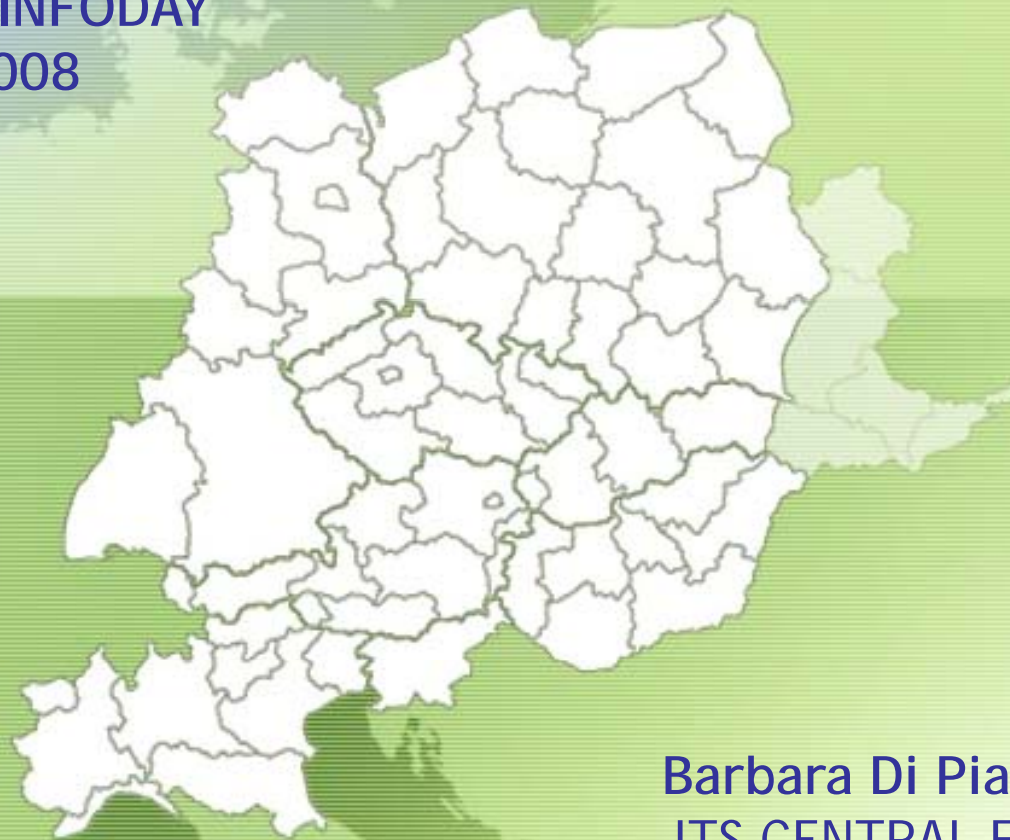


# CENTRAL EUROPE PROGRAMME 2007-2013



CENTRAL EUROPE INFODAY  
Venice, 4 March 2008



Barbara Di Piazza  
JTS CENTRAL EUROPE  
PROGRAMME

# PROGRAMME AREA



# FINANCIAL ALLOCATION



ERDF budget	National contribution	Total budget	Co-financing rate
246 Mio. EUR	52 Mio. EUR	298 Mio. EUR	75% - 85%

Priorities	ERDF
P1 - FACILITATING INNOVATION ACROSS CENTRAL EUROPE	49,2 Mio. EUR
P2 - IMPROVING ACCESSIBILITY TO, AND WITHIN, CENTRAL EUROPE	64 Mio. EUR
P3 - USING OUR ENVIRONMENT RESPONSIBLY	64 Mio. EUR
P4 - ENHANCING COMPETITIVENESS AND ATTRACTIVENESS OF CITIES AND REGIONS	54,1 Mio. EUR

# 1° CALL FOR PROPOSALS



Launch: 3 March 2008

Closure: 14 April 2008

Open to all Priorities

ERDF funds allocated: 67,2 Mio EUR

2° call within end of 2008



# PARTNERS



Who can participate ?

- National, regional and local public authorities
- Public Equivalent Bodies
- International Organisations
- Private institutions including private companies



# PARTNERSHIP



Minimum partnership requirements:

At least:

three financing partners;  
from at least three countries;  
with at least two of the partners located in EU  
CENTRAL EUROPE regions.

Recommended maximum number of partners: from 8 to 12;

Partners involved in a balanced way;

Associated institutions acting as observers and without financial contribution can be included in the project.

# CO-FINANCING RATES



Up to 75%: Austria, Germany, Italy

Up to 85%: Czech Republic, Hungary, Poland  
Slovakia, Slovenia

Compliance with State Aid has to be ensured.

In case State Aid discipline applies, *de minimis* regime will be used



# LEAD PARTNER REQUIREMENTS



Located in the EU CENTRAL EUROPE area:

- Public authorities
- PEB
- International Organisations acting under national law
- Public authorities and PEB located outside of the area but competent for certain type of actions (for IT and DE)

# PARTNERS REQUIREMENTS



- Institutions that apply for being LP can also be Project Partners
- International Organisations acting under international law
- Private institutions including private companies



# PROJECT SIZE, DURATION FUNDING



## Indicative Project size

From 1-5 million EUR total budget

Exceptional cases also smaller or larger projects can be funded

## Indicative Project duration

Between 30 - 36 months (max 48 months)



# LOCATION OF ACTIVITIES



## Activities within the EU CENTRAL EUROPE area

- Expenditures are ERDF co-financed
- Principle valid also for DE and IT assimilated partners

## Activities implemented in the EU territory but outside the EU CENTRAL EUROPE area (only if for the benefit of the Programme area)

- Expenditures are ERDF co-financed if incurred by a EU CENTRAL EUROPE partner
- Expenditure incurred by EU partners outside the EU CENTRAL EUROPE area will be funded by partners own funds (no ERDF co-financing)

## LOCATION OF ACTIVITIES



Activities implemented in the territory outside the EU (only if for the benefit of the Programme area).

- Expenditures are ERDF co-financed if spent under the responsibility of a EU CENTRAL EUROPE partner (up to 10% total ERDF project contribution)
- In case of expenditure incurred in UA, a UA partner must be involved in the partnership
- Expenditure incurred by Third Country partners outside the EU area will be funded by partners own funds (no ERDF co-financing) or by ENPI and IPA funds

# EXPECTED PROJECTS



## The programme will not support:

Projects not addressing an issue of transnational relevance or covering only single cross-border programme;

Pure research and technology development without clear links to other actors;

Mere continuation of past cooperation projects without a clear added value;

Projects fundable under other Structural Funds programmes.

# EXPECTED PROJECTS



## Highlights:

- Transnational thematic focus (selection of 1 Priority and 1 Area of Intervention)
- Strive for concrete outputs and results and actual implementation (selection of at least 1 Type of Action):
  - joint strategy + action plan development
  - transnational tool development
  - joint management establishment
  - Investment preparation
  - pilot actions (including investments)
  - other



# EXPECTED PROJECTS



## Highlights:

- Coherent approach
- Effective knowledge creation and transfer
- Effective management
- Focus on communication



# APPLICATION PACKAGE



- Application Form
- Annexes

Additional relevant documents available:

- Operational Programme
- Application Manual

Downloadable at the [www.central2013.eu](http://www.central2013.eu)



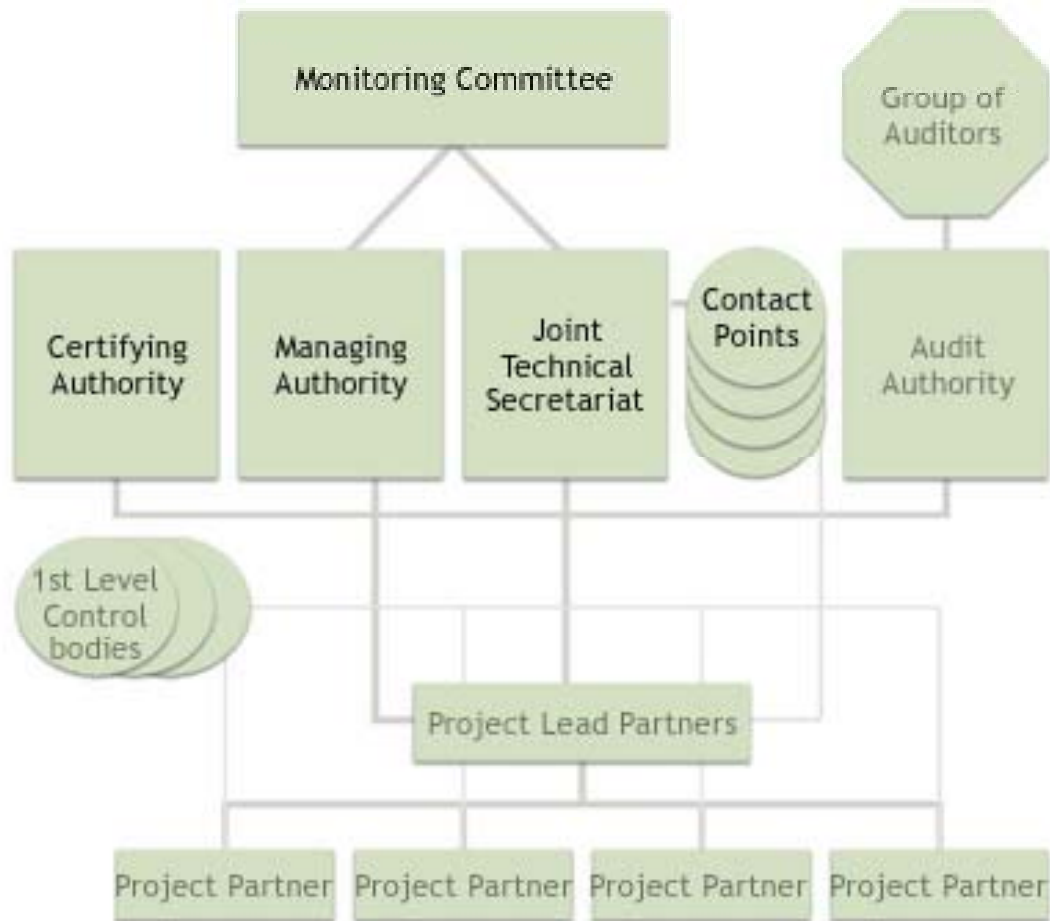
# APPLICATION PACKAGE



Section	Section
1	Basic Information
2	Proejct Outline
2.1	Relevance
2.2	Methodology
2.3	Sustainability and Knowledge Management
2.4	Partnership
3	Project Work Plan
4	Project Partners and Budget
5	Project Budget



# PROGRAMME STRUCTURE



MC (AT, CZ, DE, HU, IT, PL, SK, SI; UA and COM as observers)

MA, JTS, CA, AA based in Vienna, Austria

JTS is operational since July 2007

Contact Points in all the Member States are currently being established



## JTS SUPPORT: NEXT EVENTS



**LEAD APPLICANT BRIEFING (Prague - CZ) 27-28 March 2008**

**LEAD APPLICANT BRIEFING (Wroclaw - PL) 31/03-01/04 2008**

**LEAD APPLICANT BRIEFING (Bled - SI) 3-4 April 2008**



# JTS SUPPORT: PROGRAMME WEBSITE



Programme website: [www.central2013.eu](http://www.central2013.eu)

Thematically structured in line with the four programme priorities

Clear navigation

Daily updated news

Permanently updated calendar of events

„People section“ including contact details of potential project partners

Crosslinks of people to contents/projects

Links to online resources

Tools and FAQs

Planned: Regional profiles, discussion forum, etc.



# JTS SUPPORT: PROJECT IDEAS



Available online: [www.central2013.eu/central-projects.html](http://www.central2013.eu/central-projects.html)

Thematically structured in line with the four programme priorities

Online project idea facilitates a partner search

More than 900 Website Members

Sent to JTS

The template is available online

Online written ideas can receive a feedback from the JTS

Please use the email: [info@central2013.eu](mailto:info@central2013.eu)

Individual consultations scheduled for LAB (March/April 2008 for 1<sup>st</sup> Call)



# CONTACT/UPDATES



For more information:

CENTRAL EUROPE Programme  
Joint Technical Secretariat

Museumstrasse 3/A/III

A-1070 Vienna

Phone: +43 1 4000 76142

Fax: +43 1 4000 9976141

Email: [info@central2013.eu](mailto:info@central2013.eu)

Internet: [www.central2013.eu](http://www.central2013.eu)

Updates: Please register on our website and we will keep you posted!