

CENTRAL EUROPE PROGRAMME 2007-2013



National Info Day CENTRAL EUROPE
Vienna, 12 March 2008

Project development in the framework of the 1st call

Winfried Ritt
JTS CENTRAL EUROPE
PROGRAMME

PROGRAMME GOALS

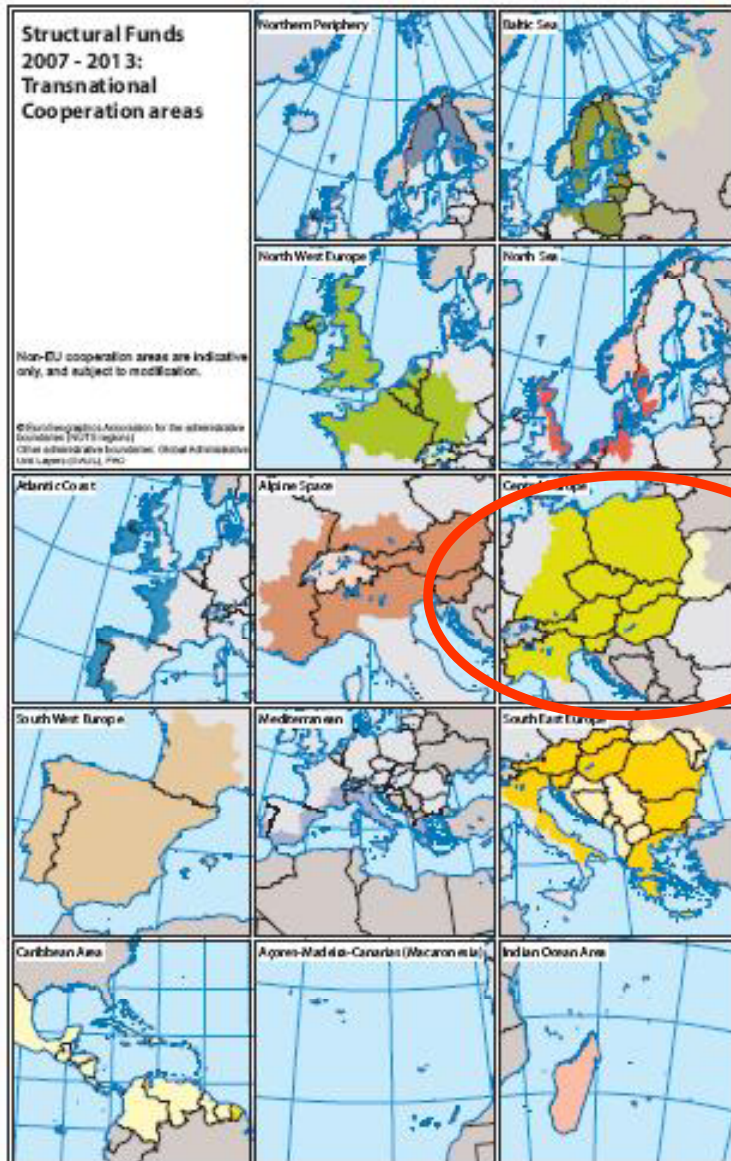


Overview:

- Programme framework
- Timeline 1st call for proposals
- Expected projects
- Project quality
- Application pack 1st call
- Application procedure
- JTS CENTRAL EUROPE support for applicants



ETC - TRANSNATIONAL COOPERATION 2007 - 2013



EU supports 13 European Transnational Cooperation Programmes

- Northern Periphery
- Baltic Sea
- North West Europe
- North Sea
- Atlantic Coast
- Alpine Space
- **Central Europe**
- South West Europe
- Mediterranean
- South East Europe
- Caribbean Area
- Açores-Madeira-Canarias
- Indian Ocean Area



PROGRAMME AREA



PROGRAMME GOALS



- Strengthening territorial cohesion
- Promoting internal integration
- Enhancing competitiveness of Central Europe



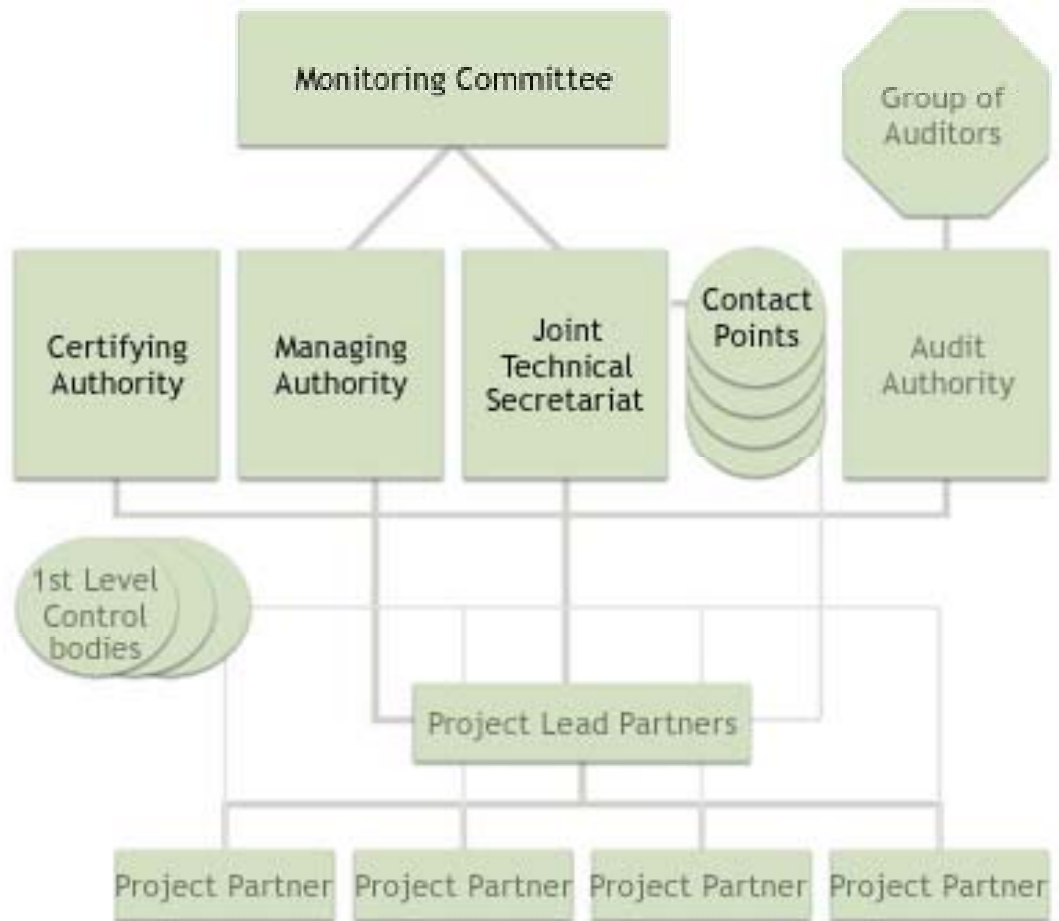
PRIORITIES & FINANCIAL ALLOCATION



ERDF budget	National contribution	Total budget	Co-financing rate
246 Mio. EUR	52 Mio. EUR	298 Mio. EUR	75% - 85%

Priorities	ERDF
P1 - FACILITATING INNOVATION ACROSS CENTRAL EUROPE	49,2 Mio. EUR
P2 - IMPROVING ACCESSIBILITY TO, AND WITHIN, CENTRAL EUROPE	64 Mio. EUR
P3 - USING OUR ENVIRONMENT RESPONSIBLY	64 Mio. EUR
P4 - ENHANCING COMPETITIVENESS AND ATTRACTIVENESS OF CITIES AND REGIONS	54,1 Mio. EUR

PROGRAMME MANAGEMENT



MC (AT, CZ, DE, HU, IT, PL, SK, SI; UA and COM as observers)

MA, JTS, CA, AA based in Vienna, Austria

JTS is operational since July 2007

Contact Points in all the Member States are currently being established



1st CALL FOR PROPOSALS: timeline



Launch: 3 March 2008

Closure: 14 April 2008

Funding decision: MC meeting, 22 July 2008

Open to all priorities

ERDF funds allocated: 67,2 Mio EUR

2nd open call within end of 2008



EXPECTED PROJECTS: Size and duration



Indicative Project size

From 1-5 million EUR total budget, in exceptional cases also smaller or larger projects can be funded

Indicative Project duration

Between 30 - 36 months (max 48 months)



EXPECTED PROJECTS



Quality characteristics:

Transnational thematic focus and partnership

Coherent approach

Effective management (incl. knowledge creation and transfer)

Concrete and visible outputs and results

Provide clear added value

Actual implementation



EXPECTED PROJECTS



The programme will not support:

Projects not addressing an issue of transnational relevance or covering only single cross-border programme;

Pure research and technology development without clear links to other actors;

Mere continuation of past cooperation projects without a clear added value;

Projects fundable under other Structural Funds programmes



EXPECTED PROJECTS: Implementation orientation



The programme has predefined five “Type of Actions”:

- Joint strategy + Action plan development
- Transnational tool development
- Joint management establishment
- Investment preparation
- Pilot actions (including investments)
- other



PROJECT QUALITY: Relevance



How relevant is the proposal to the overall programme goals and objectives?

Does the proposal contribute to Lisbon and/or Gothenburg goals and how relevant is it to other EU and national policies?

How relevant to the need and constraints of the target regions and Areas of Intervention is the proposal?

How clearly defined are the beneficiaries of the project results ?

Does the proposal contain specific added value in terms of innovation?

PROJECT QUALITY : Partnership



Does the Lead Partner have sufficient experience of project management?

Does the partnership have sufficient technical expertise (notably knowledge of the issues to be addressed)?

Is the proposed partnership appropriate and relevant to the issues to be addressed?



PROJECT QUALITY : Methodology



Are the work plan and timetable realistic, coherent and transparent?)

Is the Project design (proposed methodology) appropriate?

Are management and coordination structures efficient and transparent?



PROJECT QUALITY : Sustainability



Are Core outputs clearly defined and assumptions on the use of outputs (target groups, process assumptions) realistic?

Are outputs and results transferable, replicable and useful beyond the partnership and the transnational boundaries?

Are the Communication and knowledge management strategies clearly defined and effective?

Are the expected results of the proposed action sustainable at institutional and financial level?



PROJECT QUALITY : Budget



Does total budget demonstrate value for money?

Is project design reflected in the budget?



APPLICATION PACKAGE: 1st call



Main sources of information:

- Operational Programme (OP)
- Application Manual, 1st call
- Instructions for Applicants - How to complete the AF
- FAQ



APPLICATION PACKAGE: 1st call



Relevant documents :

- Application Form (AF)
- Obligatory annexes
 - Self-Declaration (incl. the co- financing statements, legal status, administrative & financial capacity)
 - State aid declaration
 - Map with location of partners
 - Flow chart with management structure



APPLICATION PACKAGE: 1st call Application Form



Section 1 - Basic Information

(Project summary)

Section 2 - Project outline

Section 3 - Work plan

(work packages, actions, outputs, results)

Section 4 - Partnership and Budget

(LP-PP25, assimilated partners, associated institutions)

Section 5 - Project Budget

Section 6 - Timeline

(automatic visualisation tool for work programme)



APPLICATION PACKAGE: 1st call Application Form



Section 1 - Basic Information

- Project summary
- Overview partnership
- Overview funding

Section 2 - Project outline

- Relevance
- Methodology
- Sustainability and Knowledge Management
- Partnership



APPLICATION PACKAGE: 1st call Application Form



Section 3 - Work plan

work package - action - (core) output - result

WP 0: Project preparation

WP 1: Project management and coordination

WP 2: Communication, knowledge management,
dissemination

WP 3-6: Self defined

Activities outside CENTRAL EUROPE (EU /3rd countries)



APPLICATION PACKAGE: 1st call Application Form



Section 4 - Partnership and Budget

LP-PP25, assimilated partners: Contact details,
Institutional profile, Financial contribution
Associated Institutions

Section 5 - Project Budget

Budget breakdown for work packages and: Budget lines /
Reporting periods / Partners
Specification for budget line "Externals expertise" /
"Other" / "Equipment" / "Investment"

Section 6 - Timeline

Automatic visualisation tool for the work programme

APPLICATION PACKAGE: 1st call obligatory annexes



Self-Declaration (incl. co- financing statement):

Separate for each partner except of the Lead Applicant

Included the amount of national co-financing but also information about administrative and financial capacity of the partner

Consistency of information with the AF

Different versions depending on the legal status and location of partners:

Public authorities

Public equivalent bodies & private institutions & Int. organisations acting under nat. law

Int. organisation acting under int. law

EU partners located outside CENTRAL EUROPE & partners in 3rd countries,

APPLICATION PACKAGE: 1st call obligatory annexes



State Aid declaration:

Separate for each partner including the LP with the exception of International Organisations under national and international law

focused on market oriented activities that may affect trade between Member States and previous benefit of undertakings from public aid under the „de-minimis“ regime

web based tool with pull down menus,

Map with location of partners:

predefined map with stars for the location of all partners, word file

Flow chart with management structure:

layout and format can be self defined by the partnership



Application procedure



The AF and its annexes have to be submitted in original (post stamp 14 April 2008 at the latest) and electronic version (e-mail sent until 14 April 2008, 24.00h) in due time, The digital and paper versions of all documents must be equal in the content,

The file protection of the AF (excel file) must not be removed,

The AF must be fully and properly filled in (no error messages),

The AF is completed in English,

The AF hard copy is dated, stamped and signed by a duly authorised representative of the Lead Applicant,

The Self-declaration (incl. co-financing statements) and the state aid declarations

are printed on partners' letter headed paper,

The amount of national co-financing in both documents corresponds to the AF,

The text of the annexes cannot be modified.

JTS SUPPORT: NEXT EVENTS



LEAD APPLICANT BRIEFING (Prague - CZ) 27-28 March 2008

LEAD APPLICANT BRIEFING (Wroclaw - PL) 31/03-01/04 2008

LEAD APPLICANT BRIEFING (Bled - SI) 3-4 April 2008



JTS SUPPORT : WEBSITE



Programme website: www.central2013.eu

Thematically structured in line with the four programme priorities

Clear navigation

Daily updated news

Permanently updated calendar of events

„People section“ including contact details of potential project partners

Crosslinks of people to contents/projects

Links to online resources

Tools and FAQs

Planned: Regional profiles, discussion forum, etc.



JTS SUPPORT : PROJECT IDEAS



Available online: www.central2013.eu/central-projects.html

Thematically structured in line with the four programme priorities

Online project idea facilitates a partner search

More than 900 Website Members

Sent to JTS

The template is available online

Online written ideas can receive a feedback from the JTS

Please use the email: info@central2013.eu

Individual consultations scheduled for LAB (March/April 2008 for 1st Call)



CONTACT/UPDATES



For more information:

CENTRAL EUROPE Programme
Joint Technical Secretariat

Museumstrasse 3/A/III

A-1070 Vienna

Phone: +43 1 4000 76142

Fax: +43 1 4000 9976141

Email: info@central2013.eu

Internet: www.central2013.eu

Updates: Please register on our website and we will keep you posted!

Thank you for your attention!



EUROPEAN UNION
EUROPEAN REGIONAL
DEVELOPMENT FUND

